

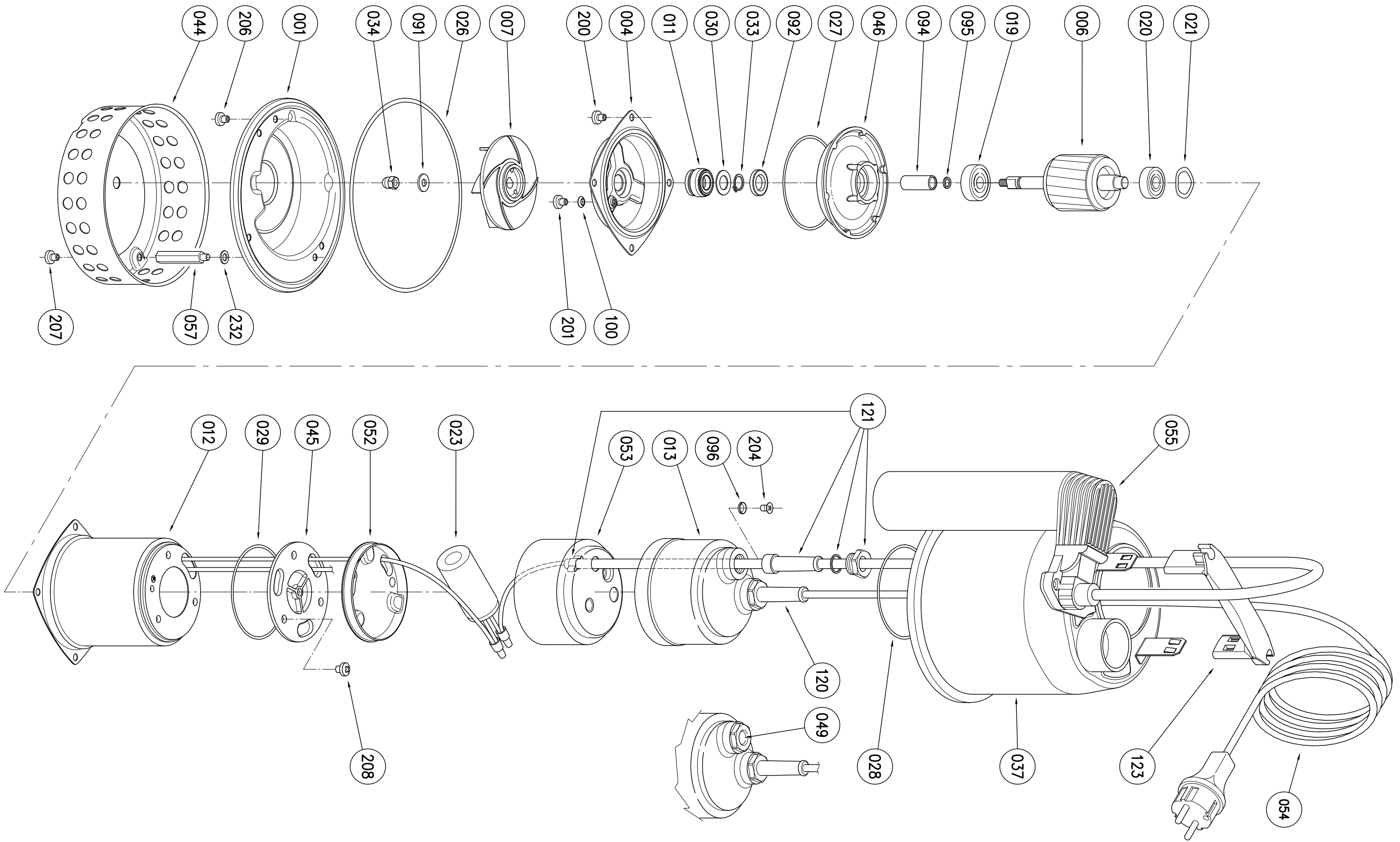
REV.	DESCRIZIONE DELLA MODIFICA	N° MOD.	DIS.	CONTR.	R&D	NORM.	DATA




DIS. PERAZZOLO  
 NORM.  
 DATA 04.08.06

DESCRIZIONE  
 BEST ONE - ONE VOX  
 OPTIMA

N° DISEGNO  
**01420**  
 REV



								DIS. PERAZZOLO	DESCRIZIONE BEST ONE – OPTIMA MS	N° DISEGNO 01426
								NORM.		DATA 04.08.06
REV.	DESCRIZIONE DELLA MODIFICA	N° MOD.	DIS.	CONTR.	R&D	NORM.	DATA			

Pezzi di ricambio  
elettropompe

Spare parts  
pumps

## BEST ONE

Pos.	Denominazione	Part name	BEST ONE	BEST ONE M	BEST ONE MA	BEST ONE MS	
			Dwg no.01420	Dwg no.01420	Dwg no.01420	Dwg no.01426	
001	VOLUTA	Suction cover	241445017	241445017	241445017	241445017	
004	DISCO PORTA TENUTA	Casing cover	251438055	251438055	251438055	251438055	
006	ALBERO ROTORE	Shaft with rotor	275412012	275412012	275412012	275412012	
007	GIRANTE	Impeller	241451002	241451002	241451002	241451002	
011	TENUTA BT PR/AR	Mechanical seal	360406112	360406112	360406112	360406112	
011	TENUTA BT FIS. PF	Mechanical seal	360408412	360408412	360408412	360408412	
012	CASSA STATORE	Motor frame with stator	257930051	257930049	257930049	257930049	
013	COPERCHIO MOTORE	Motor cover	251424048	251424048	251424049	251424049	
019	CUSCINETTO 6200 ZZ	Lower ball bearing	360316200	360316200	360316200	360316200	
020	CUSCINETTO 6000 ZZ	Upper ball bearing	360316000	360316000	360316000	360316000	
021	ANELLO COMPENSAT.	Adjusting ring	360600026	360600026	360600026	360600026	
023	CONDENS. MF 8 450V	Capacitor		361401080	361401080	361401080	
026	ANELLO OR 3,1X159,3	O-Ring	360917914	360917914	360917914	360917914	
027	ANELLO OR 4350 D.88	O-Ring	360938850	360938850	360938850	360938850	
028	ANELLO OR 3300 D.75	O-Ring	360927587	360927587	360927587	360927587	
029	ANELLO OR 3300 D.75	O-Ring	360927587	360927587	360927587	360927587	
030	RONDELLA SPALLAM.	Washer	360676024	360676024	360676024	360676024	
033	ANELLO SEEGER D.12	Seeger ring	360600009	360600009	360600009	360600009	
034	DADO CALOT. M 6	Impeller nut	363351000	363351000	363351000	363351000	
037	CAMICIA ESTERNA	Pump casing	251427330	251427330	251427330	251427333	
044	FILTRO	Strainer	248446019	248446019	248446019	248446019	
045	SUPPORTO CUSCINETTO	Upper bearing housing	251481036	251481036	251481036	251481036	
046	SUPPORTO CUSCIN.INF	Lower bearing housing	251481038	251481038	251481038	251481038	
052	BASE SCATOLA MORS.	Terminal insulating base	372524049	372524049	372524049	372524049	
053	SCATOLA MORSETT.	Terminal insulating box	372524046	372524046	372524047	372524047	

Data di creaz./  
First release  
**September 06**

(n)= Quantità per pompa / Quantity for pump

1/4



**EBARA** PUMPS EUROPE S.p.A.

Pezzi di ricambio  
elettropompe

Spare parts  
pumps

## BEST ONE

Pos.	Denominazione	Part name	BEST ONE	BEST ONE M	BEST ONE MA	BEST ONE MS	
			Dwg no.01420	Dwg no.01420	Dwg no.01420	Dwg no.01426	
054	CAVO H07RN-F 4G1	Power cable	367900028	367900009	367900009	367900009	
055	GALLEGG.KEY C/CAVO	Switch			365231002	365200070	
057	DISTANZIALE FILTRO	Spacer	375434130 (2)	375434130 (2)	375434130 (2)	375434130 (2)	
091	RONDELLA D.6,2X15	Washer	360676033	360676033	360676033	360676033	
092	ANELLO TEN.BAD 12X2	Lip seal	360601422	360601422	360601422	360601422	
094	DISTANZIALE GIRANTE	Shaft sleeve	375434129	375434129	375434129	375434129	
095	ANELLO OR 2025 D.6,0	O-Ring	360916070	360916070	360916070	360916070	
096	ANELLO OR 2018 D.4,4	O-Ring	360914480	360914480	360914480	360914480	
100	ANELLO OR 2018 D.4,4	O-Ring	360914480	360914480	360914480	360914480	
120	GR.PRESSACAVO ALIM.	Cable connector set-power	352665037	352665037	352665037	352665037	
121	GR.PRESSACAVO GALL.	Cable connector set-float			352665038	352665038	
123	MANIGLIA	Handle	251460028	251460027	251460027	251460027	
200	VITE TCC M 5X6	Screw	369640002 (4)	369640002 (4)	369640002 (4)	369640002 (4)	
201	VITE TCC M 5X6	Screw	369640002	369640002	369640002	369640002	
204	VITE TCC M 5X6	Screw	369640002	369640002	369640002	369640002	
206	VITE TCC M 5X6	Screw	369640002 (3)	369640002 (3)	369640002 (3)	369640002 (3)	
207	VITE TCC M 5X6	Screw	369640002 (2)	369640002 (2)	369640002 (2)	369640002 (2)	
208	VITE TCC M 5X6	Screw	369640002 (3)	369640002 (3)	369640002 (3)	369640002 (3)	
232	RONDELLA PIANA	Washer	360676003 (2)	360676003 (2)	360676003 (2)	360676003 (2)	

Data di creaz./  
First release  
**September 06**  
Rev.A 14/11/06

(n)= Quantità per pompa / Quantity for pump

2/4



**EBARA** PUMPS EUROPE S.p.A.

Pezzi di ricambio  
elettropompe

Spare parts  
pumps

## BEST ONE VOX

Pos.	Denominazione	Part name	BEST ONE VOX	B. ONE VOX M	B. ONE VOX MA		
			Dwg no.01420	Dwg no.01420	Dwg no.01420		
001	VOLUTA	Suction cover	241445018	241445018	241445018		
004	DISCO PORTA TENUTA	Casing cover	251438055	251438055	251438055		
006	ALBERO ROTORE	Shaft with rotor	275412012	275412012	275412012		
007	GIRANTE	Impeller	241451002	241451002	241451002		
011	TENUTA BT FIS. PF	Mechanical seal	360408412	360408412	360408412		
011	TENUTA BT PR/AR	Mechanical seal	360406112	360406112	360406112		
012	CASSA STATORE	Motor frame with stator	257930051	257930049	257930049		
013	COPERCHIO MOTORE	Motor cover	251424048	251424048	251424049		
019	CUSCINETTO 6200 ZZ	Lower ball bearing	360316200	360316200	360316200		
020	CUSCINETTO 6000 ZZ	Upper ball bearing	360316000	360316000	360316000		
021	ANELLO COMPENSAT.	Adjusting ring	360600026	360600026	360600026		
023	CONDENS. MF 8 450V	Capacitor		361401080	361401080		
026	ANELLO OR 3,1X159,3	O-Ring	360917914	360917914	360917914		
027	ANELLO OR 4350 D.88	O-Ring	360938850	360938850	360938850		
028	ANELLO OR 3300 D.75	O-Ring	360927587	360927587	360927587		
029	ANELLO OR 3300 D.75	O-Ring	360927587	360927587	360927587		
030	RONDELLA SPALLAM.	Washer	360676024	360676024	360676024		
033	ANELLO SEEGER D.12	Seeger ring	360600009	360600009	360600009		
034	DADO CALOT. M 6	Impeller nut	363351000	363351000	363351000		
037	CAMICIA ESTERNA	Pump casing	251427330	251427330	251427330		
044	FILTRO	Strainer	248446020	248446020	248446020		
045	SUPPORTO CUSCINETTO	Upper bearing housing	251481036	251481036	251481036		
046	SUPPORTO CUSCIN.INF	Lower bearing housing	251481038	251481038	251481038		
052	BASE SCATOLA MORS.	Terminal insulating base	372524049	372524049	372524049		
053	SCATOLA MORSETT.	Terminal insulating box	372524046	372524046	372524047		

Data di creaz./  
First release  
**september 06**

(n)= Quantità per pompa / Quantity for pump

3/4



**EBARA** PUMPS EUROPE S.p.A.

Pezzi di ricambio  
elettropompe

Spare parts  
pumps

## BEST ONE VOX

Pos.	Denominazione	Part name	BEST ONE VOX	B. ONE VOX M	B. ONE VOX MA		
			Dwg no.01420	Dwg no.01420	Dwg no.01420		
054	CAVO H07RN-F 4G1	Power cable	367900028	367900009	367900009		
055	GALLEGG.KEY C/CAVO	Switch			365231002		
057	DISTANZIALE FILTRO	Spacer	375434131 (2)	375434131 (2)	375434131 (2)		
091	RONDELLA D.6,2X15	Washer	360676033	360676033	360676033		
092	ANELLO TEN.BAD 12X2	Lip seal	360601422	360601422	360601422		
094	DISTANZIALE GIRANTE	Shaft sleeve	375434129	375434129	375434129		
095	ANELLO OR 2025 D.6,0	O-Ring	360916070	360916070	360916070		
096	ANELLO OR 2018 D.4,4	O-Ring	360914480	360914480	360914480		
100	ANELLO OR 2018 D.4,4	O-Ring	360914480	360914480	360914480		
120	GR.PRESSACAVO ALIM.	Cable connector set-power	352665037	352665037	352665037		
121	GR.PRESSACAVO GALL.	Cable connector set-float			352665038		
123	MANIGLIA	Handle	251460028	251460027	251460027		
200	VITE TCC M 5X6	Screw	369640002 (4)	369640002 (4)	369640002 (4)		
201	VITE TCC M 5X6	Screw	369640002	369640002	369640002		
204	VITE TCC M 5X6	Screw	369640002	369640002	369640002		
206	VITE TCC M 5X6	Screw	369640002 (3)	369640002 (3)	369640002 (3)		
207	VITE TCC M 5X6	Screw	369640002 (2)	369640002 (2)	369640002 (2)		
208	VITE TCC M 5X6	Screw	369640002 (3)	369640002 (3)	369640002 (3)		
232	RONDELLA PIANA	Washer	360676003 (2)	360676003 (2)	360676003 (2)		

Data di creaz./  
First release  
**september 06**

(n)= Quantità per pompa / Quantity for pump

4/4



**EBARA** PUMPS EUROPE S.p.A.